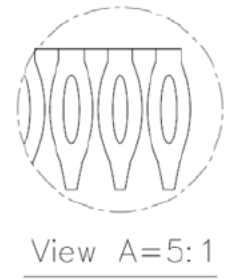
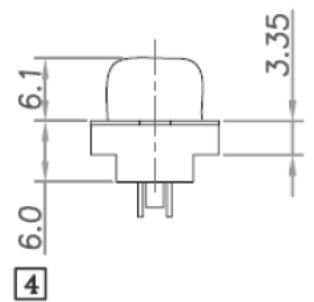
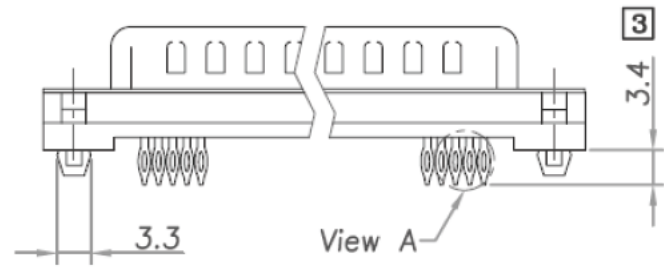
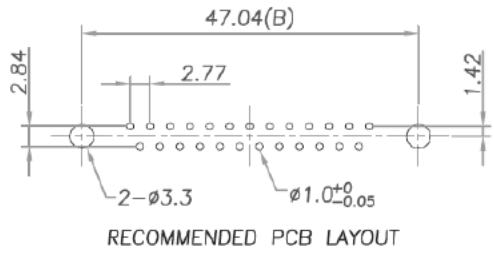
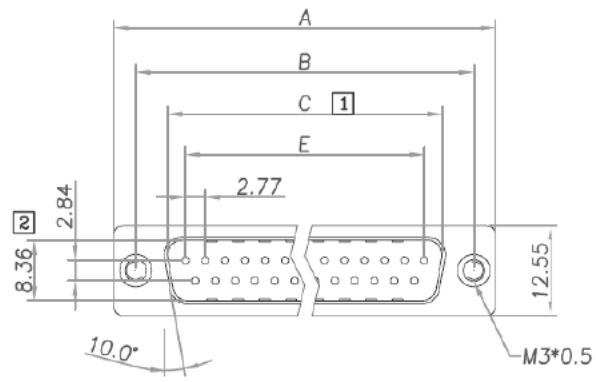


RoHS COMPLIANT



Material & Finish

- SHELL: Tin, Nickel Plated
- PIN CONTACT: Brass, Gold Flash Plated
- INSULATOR: PBT & Glass-fibre reinforced UL-94-V0 Black
- BOARDLOCK: Brass, Tin Plated
- CURRENT RATING: 3 Amp
- CONTACT RESISTANCE: 20mΩ Max
- DIELECTRIC STRENGTH: 1000VAC for one minute
- INSULATOR RESISTANCE: 1000MΩ Min. (at 500VDC)
- TEMPERATURE: -55°C to +105°C

Dimensions				
Positions	A	B	C	E
9	30.81	24.99	16.92	11.08
15	39.20	33.30	25.25	19.39
25	53.05	47.04	38.96	33.24
37	69.40	63.50	55.42	49.86

DIMENSIONS ARE IN MILLIMETERS TOLERANCE				SCHMID-M	
0.	±0.40	ANGLE ±3°	SCALE	5:1	TITLE D-SUB PRESS FIT S/T TYPE MALE (9-37)
0.0	±0.30		REV	A-1	
0.00	±0.20		DRAWN	Brown	DATE
APPROVAL			Walter	DATE	FILE NO
					DRAWING NO SM C05 3039 XX M